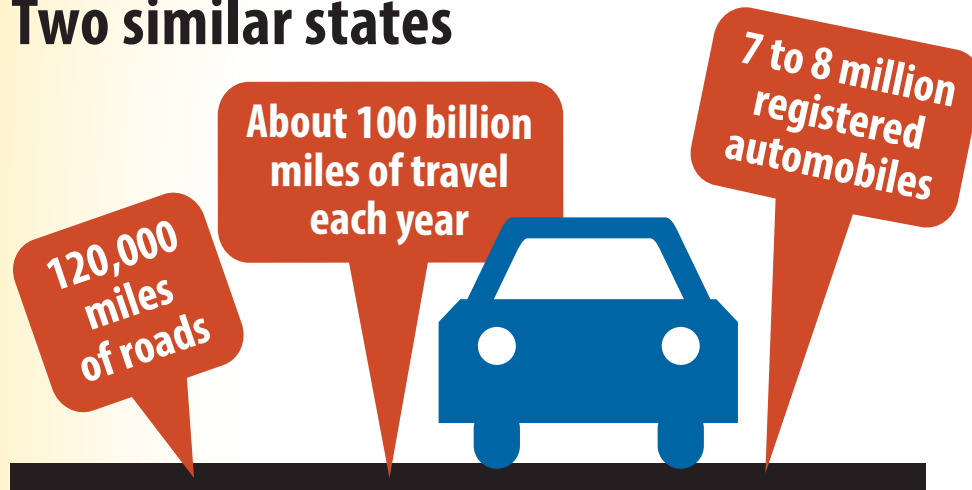


Other states are investing in roads and bridges

Michigan and Pennsylvania: Two similar states

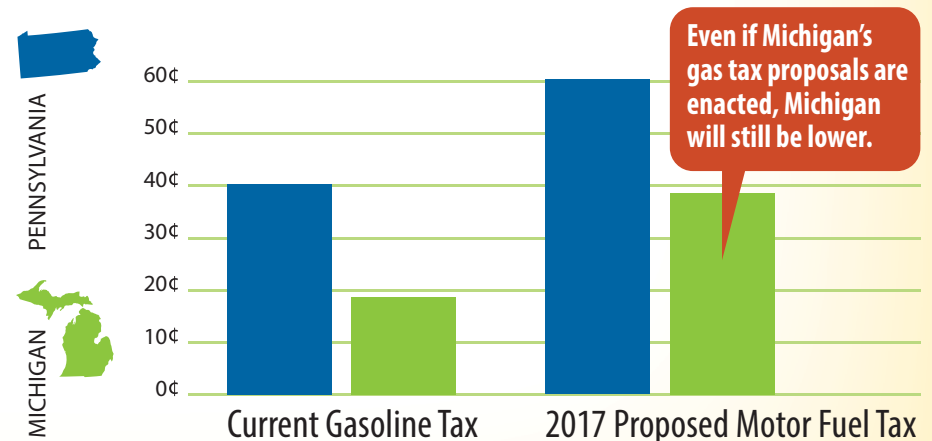


But that's where the similarities end. Pennsylvania:

- Recently decided to invest \$2.3 billion more per year by 2018, or \$180 more per person.
- Is phasing in increases to fuel taxes, registration fees and more than 100 other driver and vehicle-related fees.

	Pennsylvania	Michigan
Total Transportation Budget	\$6.2 billion	\$3.4 billion
Current Gas Tax	40.7 cents*	18.7 cents
Current Average Vehicle Registration Fee	\$36, not tax deductible	\$100, tax deductible
Road Investment per person (2010 Census) <i>before the new increase</i>	\$530 per person	\$154 per person
2013 Unemployment Rate	6.9%	8.4%

* Pennsylvania's Oil Company Franchise Tax is a tax at the wholesale level that fluctuates with the price of gas.



Why isn't Michigan?