



## **Michigan Districts - Contact List**

**Dispatch: 800-778-9140**

### **Western Michigan District (WMI)**

<b>Staff</b>	<b>Position</b>	<b>Email</b>	<b>Cell</b>
Garry Seeburger	District Manager	<a href="mailto:garryseeburger@usicllc.com">garryseeburger@usicllc.com</a>	(616) 262-6940
Tony Bauman	State Operations Manager	<a href="mailto:anthonybauman@usicllc.com">anthonybauman@usicllc.com</a>	(616) 648-5309
Katie Keech	Administrative Assistant	<a href="mailto:katiekeech@usicllc.com">katiekeech@usicllc.com</a>	(734) 812-7843
Emily Farmer	Operations Coordinator	<a href="mailto:emilyfarmer@usicllc.com">emilyfarmer@usicllc.com</a>	(616) 885-4673
Mike LaGorio	Claims Coordinator	<a href="mailto:mikelagorio@usicllc.com">mikelagorio@usicllc.com</a>	(586) 612-5036
Nicholas Kruisenga	Training & Development Leader	<a href="mailto:nicholaskruisenga@usicllc.com">nicholaskruisenga@usicllc.com</a>	(616) 885-7880
<b>Supervisor</b>	<b>Team</b>	<b>Email</b>	<b>Cell</b>
Travis Lynn	WM1 Team	<a href="mailto:travislynn@usicllc.com">travislynn@usicllc.com</a>	(616) 437-9836
Rob Henderson	WM2 Team	<a href="mailto:robhenderson@usicllc.com">robhenderson@usicllc.com</a>	(402) 676-5247
Shannon Taylor	WM3 Team	<a href="mailto:shannontaylor@usicllc.com">shannontaylor@usicllc.com</a>	(989) 313-0132
John Holle	WM4 Team	<a href="mailto:johnholle@usicllc.com">johnholle@usicllc.com</a>	(616) 490-5468
Nathan Furney	WM5 Team	<a href="mailto:nathanfurney@usicllc.com">nathanfurney@usicllc.com</a>	(616) 498-5101
Jack Hirdes	WM7 Team	<a href="mailto:jackhirdes@usicllc.com">jackhirdes@usicllc.com</a>	(616) 885-7929
James Nowak	WM8 Team	<a href="mailto:jamesnowak@usicllc.com">jamesnowak@usicllc.com</a>	(248) 817-9415
David Renney	WM9 Team	<a href="mailto:davidrenney@usicllc.com">davidrenney@usicllc.com</a>	(616) 885-4345
Nick Cross	WM10 Team	<a href="mailto:nicholascross@usicllc.com">nicholascross@usicllc.com</a>	(616) 238-9225

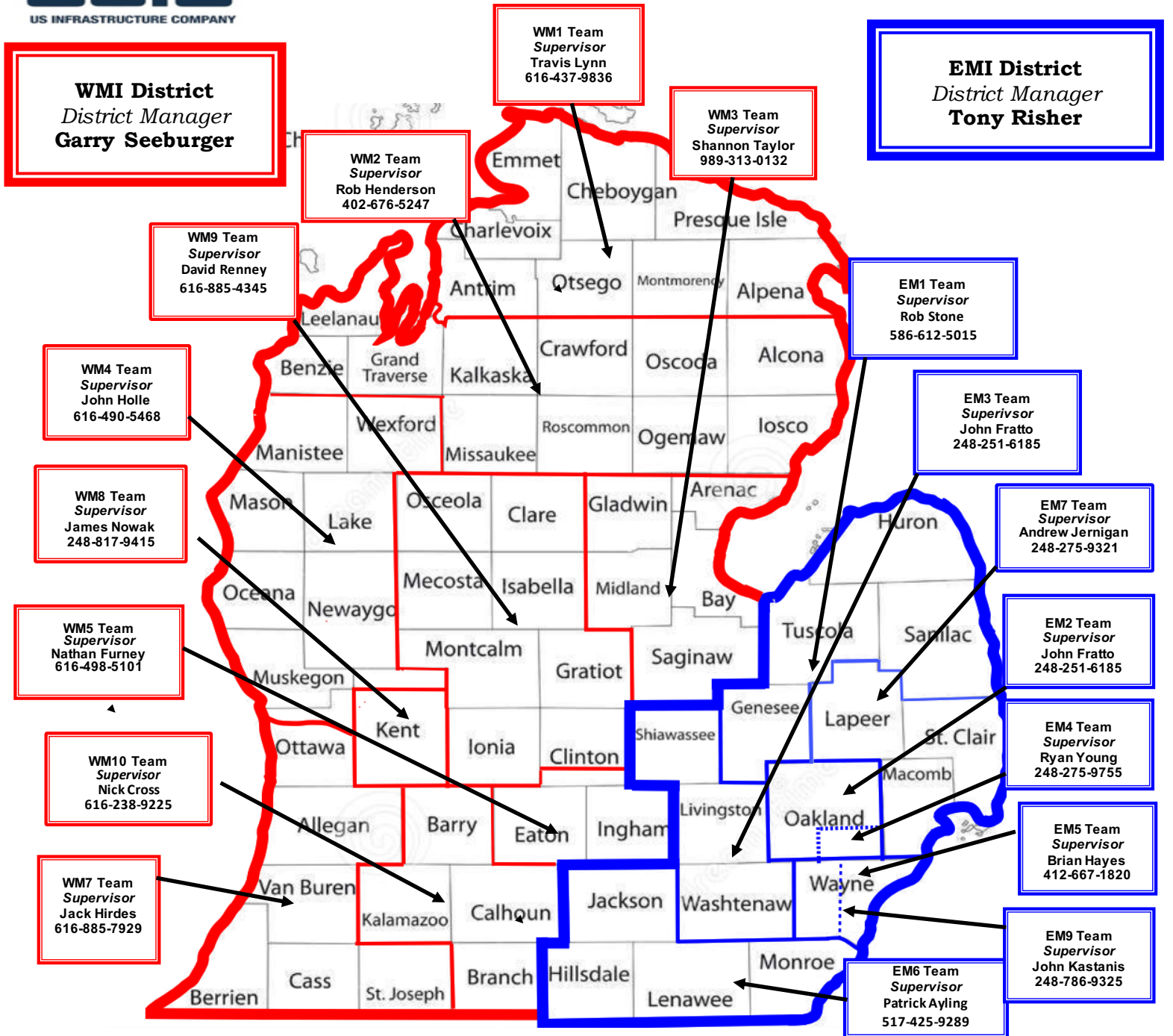
### **Eastern Michigan District (EMI)**

<b>Staff</b>	<b>Position</b>	<b>Email</b>	<b>Cell</b>
Tony Risher	District Manager	<a href="mailto:tonyrisher@usicllc.com">tonyrisher@usicllc.com</a>	(810) 360-9582
Tony Bauman	State Operations Manager	<a href="mailto:anthonybauman@usicllc.com">anthonybauman@usicllc.com</a>	(616) 648-5309
Katie Keech	Administrative Assistant	<a href="mailto:katiekeech@usicllc.com">katiekeech@usicllc.com</a>	(734) 812-7843
Emily Farmer	Operations Coordinator	<a href="mailto:emilyfarmer@usicllc.com">emilyfarmer@usicllc.com</a>	(616) 885-4673
Mike LaGorio	Claims Coordinator	<a href="mailto:mikelagorio@usicllc.com">mikelagorio@usicllc.com</a>	(586) 612-5036
Joel Geary	Safety & Training Leader	<a href="mailto:joelgeary@usicllc.com">joelgeary@usicllc.com</a>	(248) 410-0924
<b>Supervisor</b>	<b>Team</b>	<b>Email</b>	<b>Cell</b>
Robert Stone	EM1 Team	<a href="mailto:robertstone@usicllc.com">robertstone@usicllc.com</a>	(586) 612-5015
John Fratto	EM2 Team	<a href="mailto:johnfratto@usicllc.com">johnfratto@usicllc.com</a>	(248) 251-6185
John Fratto	EM3 Team	<a href="mailto:johnfratto@usicllc.com">johnfratto@usicllc.com</a>	(248) 251-6185
Ryan Young	EM4 Team	<a href="mailto:ryanyoung@usicllc.com">ryanyoung@usicllc.com</a>	(248) 275-9755
Brian Hayes	EM5 Team	<a href="mailto:brianhayes@usicllc.com">brianhayes@usicllc.com</a>	(412) 667-1820
Patrick Ayling	EM6 Team	<a href="mailto:patrickayling@usicllc.com">patrickayling@usicllc.com</a>	(517) 425-9289
Andrew Jernigan	EM7 Team	<a href="mailto:AndrewJernigan@usicllc.com">AndrewJernigan@usicllc.com</a>	(248) 275-9321
John Kastanis	EM9 Team	<a href="mailto:johnthankastanis@usicllc.com">johnthankastanis@usicllc.com</a>	(248) 786-9325



Michigan Districts & Team Maps

Updated 11/02/2020





## Michigan Districts & Teams Map

Updated - 11/02/2020

**Michigan Upper Peninsula  
Supervisor  
Travis Lynn  
616-437-9836  
Only Chippewa, Mackinac, Schoolcraft, & Luce  
Counties in the UP**



**All other Counties in the UP:**

*Supervisor*

**Dennis Schmitz (715) 492-0883**

**DennisSchmitz@usicllc.com**

**Other counties in the UP except:**

***Chippewa, Mackinac, Luce, & Schoolcraft***