



Michigan Districts - Contact List

Dispatch: 800-778-9140

Western Michigan District (WMI)

Staff	Position	Email	Cell
Garry Seeburger	District Manager	garryseeburger@usicllc.com	(616) 262-6940
Tony Bauman	State Operations Manager	anthonybauman@usicllc.com	(616) 648-5309
Katie Keech	Administrative Assistant	katiekeech@usicllc.com	(734) 812-7843
Emily Farmer	Operations Coordinator	emilyfarmer@usicllc.com	(616) 885-4673
Mike LaGorio	Claims Coordinator	mikelagorio@usicllc.com	(586) 612-5036
Nicholas Kruisenga	Training & Development Leader	nicholaskruisenga@usicllc.com	(616) 885-7880
Supervisor	Team	Email	Cell
Travis Lynn	WM1 Team	travislynn@usicllc.com	(616) 437-9836
Rob Henderson	WM2 Team	robhenderson@usicllc.com	(402) 676-5247
Shannon Taylor	WM3 Team	shannontaylor@usicllc.com	(989) 313-0132
John Holle	WM4 Team	johnholle@usicllc.com	(616) 490-5468
Nathan Furney	WM5 Team	nathanfurney@usicllc.com	(616) 498-5101
Shawn Holmes	WM6 Team	shawnholmes@usicllc.com	(616) 260-2644
Jack Hirdes	WM7 Team	jackhirdes@usicllc.com	(616) 885-7929
James Nowak	WM8 Team	jamesnowak@usicllc.com	(248) 817-9415
David Renney	WM9 Team	davidrenney@usicllc.com	(616) 885-4345
Clayton Carpenter	WM10 Team	claytoncarpenter@usicllc.com	(616) 490-8386

Eastern Michigan District (EMI)

Staff	Position	Email	Cell
Tony Risher	District Manager	tonyrisher@usicllc.com	(810) 360-9582
Tony Bauman	State Operations Manager	anthonybauman@usicllc.com	(616) 648-5309
Katie Keech	Administrative Assistant	katiekeech@usicllc.com	(734) 812-7843
Emily Farmer	Operations Coordinator	emilyfarmer@usicllc.com	(616) 885-4673
Mike LaGorio	Claims Coordinator	mikelagorio@usicllc.com	(586) 612-5036
Joel Geary	Safety & Training Leader	joelgeary@usicllc.com	(248) 410-0924
Supervisor	Team	Email	Cell
Robert Stone	EM1 Team	robertstone@usicllc.com	(586) 612-5015
Dylan Wheeler	EM2 Team	dylanwheeler@usicllc.com	(734) 780-6253
John Fratto	EM3 Team	johnfratto@usicllc.com	(248) 251-6185
Ryan Young	EM4 Team	ryanyoung@usicllc.com	(248) 275-9755
Brian Hayes	EM5 Team	brianhayes@usicllc.com	(412) 667-1820
Patrick Ayling	EM6 Team	patrickayling@usicllc.com	(517) 425-9289
Mike Hollandsworth	EM7 Team	michaelhollandsworth@usicllc.com	(248) 275-9986
John Kastanis	EM9 Team	johnthankastanis@usicllc.com	(248) 786-9325



Michigan Districts & Team Maps

Updated 3/09/2020

WMI District
District Manager
Garry Seeburger

EMI District
District Manager
Tony Risher

WM1 Team
Supervisor
Travis Lynn
616-437-9836

WM3 Team
Supervisor
Shannon Taylor
989-313-0132

WM2 Team
Supervisor
Rob Henderson
402-676-5247

WM9 Team
Supervisor
David Renney
616-885-4345

EM1 Team
Supervisor
Rob Stone
586-612-5015

WM4 Team
Supervisor
John Holle
616-490-5468

EM3 Team
Supervisor
John Fratto
248-251-6185

WM8 Team
Supervisor
James Nowak
248-817-9415

EM7 Team Sup
Supervisor
Mike Hollandsworth
248-275-9986

WM5 Team
Supervisor
Nathan Furney
616-498-5101

EM2 Team
Supervisor
Dylan Wheeler
734-780-6253

WM6 Team
Supervisor
Shawn Holmes
616-260-2644

EM4 Team
Supervisor
Ryan Young
248-275-9755

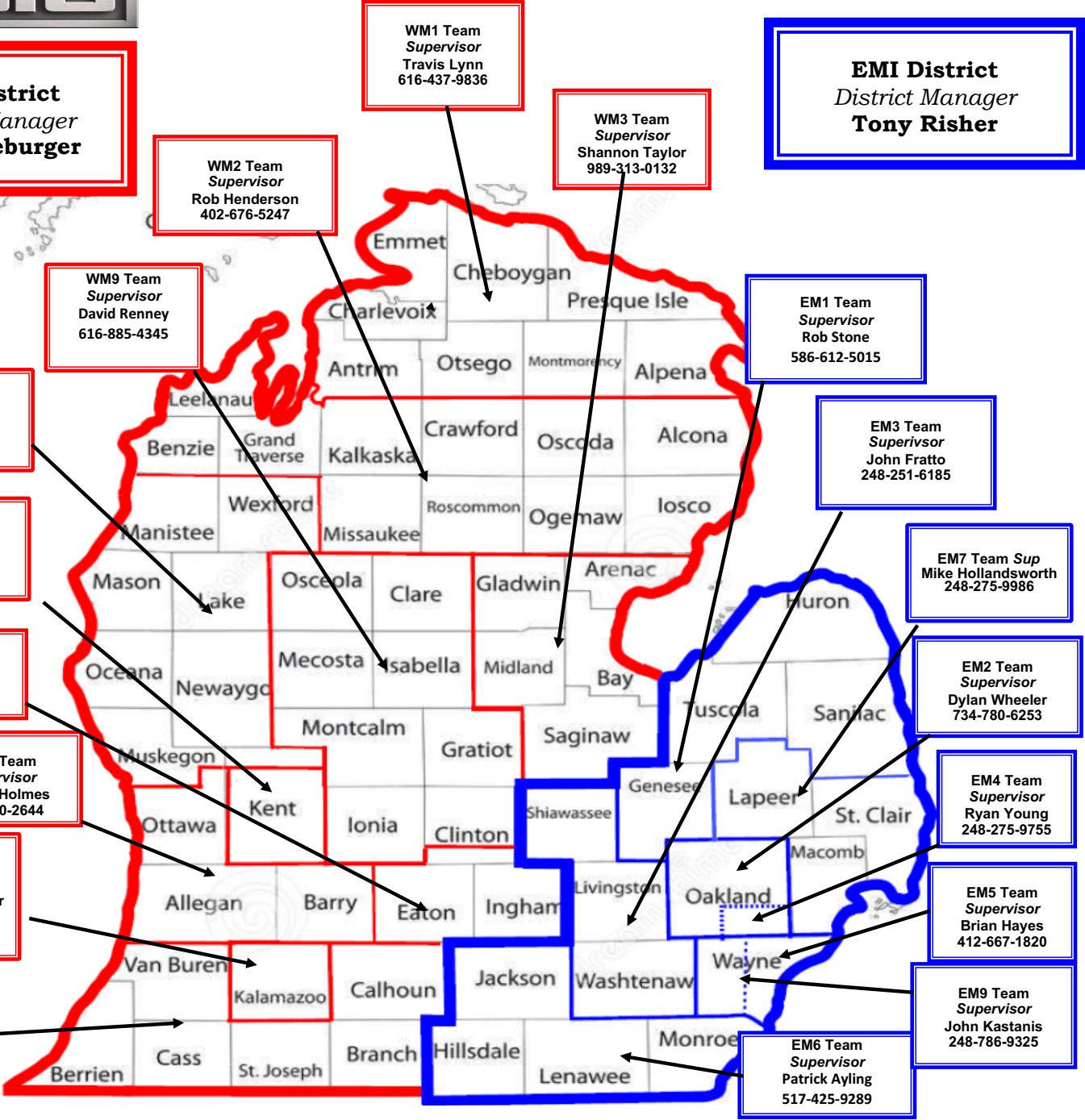
WM10 Team
Supervisor
Clayton Carpenter
616-490-8386

EM5 Team
Supervisor
Brian Hayes
412-667-1820

WM7 Team
Supervisor
Jack Hirdes
616-885-7929

EM9 Team
Supervisor
John Kastanis
248-786-9325

EM6 Team
Supervisor
Patrick Ayling
517-425-9289

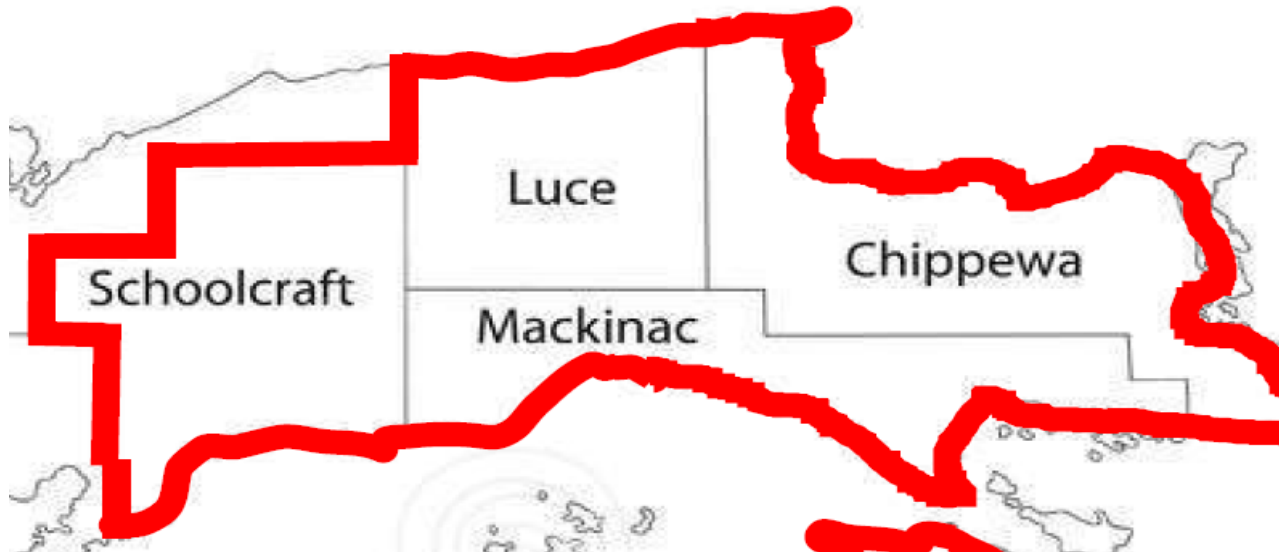




Michigan Districts & Teams Map

Updated - 3/09/2020

Michigan Upper Peninsula
Supervisor
Travis Lynn
616-437-9836
Only Chippewa, Mackinac, Schoolcraft, & Luce
Counties in the UP



All other Counties in the UP:

Supervisor

Dennis Schmitz (715) 492-0883

DennisSchmitz@usicllc.com

Other counties in the UP except:

Chippewa, Mackinac, Luce, & Schoolcraft